

# Future St Raphael's Summer Exhibition - Event Summary & Feedback

## Design Exhibition

22nd and 24th June, 2023

Brent Council, Karakusevic Carson Architects and the SRV held a public pop-up exhibition for proposals for the Future St Raphael's Estate. The exhibition briefly shared the final phase 1 proposals that were submitted for planning in February 2023, with the main body of the exhibition containing updates on the developing designs for the community hub.

### Event Programme

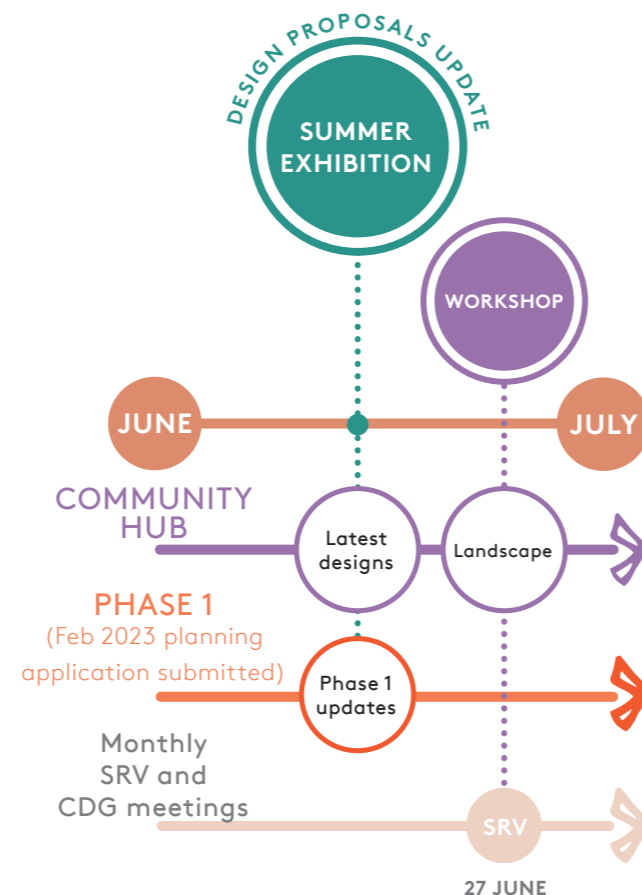
The event was held in Lilburne Walk, with games, storytelling workshops and activities for children in the temporary community hub. An ice-cream truck distributed 200 free ice-creams in the hot weather, and a 1:1 outline of the proposed community hub's footprint was sprayed in bright paint on the site to show the extents of the building. Representatives from Brent council also carried out door-knocking on Saturday the 24th, signposting residents to the event.

### Gathering Resident Feedback

Approximately 130 residents attended. Design information booklets and feedback forms were provided. Copies of the feedback form were also left at the community centre with free-post envelopes for visitors to fill out in their own time, and the online feedback form link has been shared extensively. The feedback window was extended to two months to allow more responses, and the data from 27 paper forms and 5 online forms is detailed in this report.

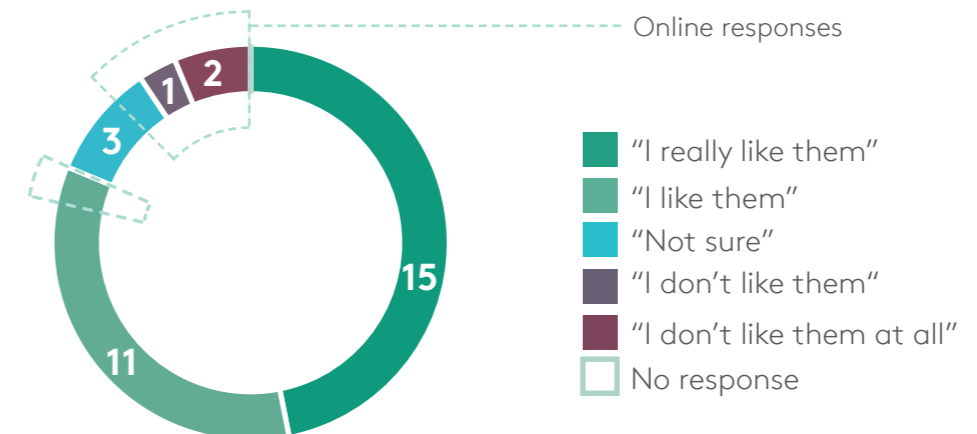
### Outcomes

Overall, the results demonstrate strong support for proposals for estate-wide improvements and the new community hub, with residents offering a number of ideas for the outdoor spaces and landscape.



## Design Strategy

1. What do you think of our design approach for the new community hub space?



### Comments

"Design is warm and welcoming"

"If all goes to plan, it will be an asset and should bring the WHOLE estate together"

"It's very nice and takes up the extra space"

"It would make the neighbourhood much more fun and welcoming"

"[I like it] because children can get more facilities"





# Future St Raphael's

## Summer Exhibition - Event Summary & Feedback

### 2. How well do you think the design responds to the local needs of residents?



#### Comments

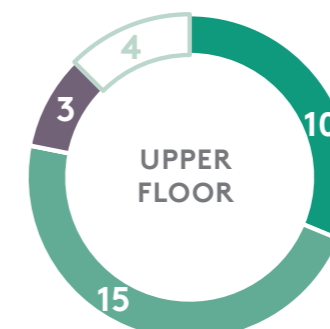
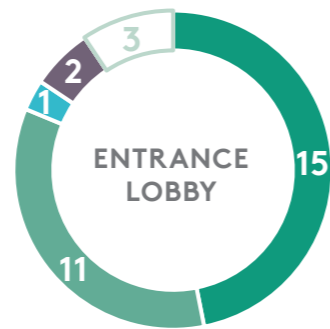
- "They have considered my past ideas on the displays"
- "It has more space for events"
- "Very different to the other projects getting done in the communities"
- "I like these ideas"
- "There will be more activities for younger children"
- "Older adults might enjoy the café"
- "I though there would be something extra for the elderly residents, it seems very youth orientated (which we do need) but the elderly need something too"
- "There will always be a number who will be discontented"

### Community Hub Layout

#### 3. What do you think about our designs for the spaces in the new Community Hub?

##### Comments

- "It looks welcoming and has a lot of space"
- "It's different aesthetics compared to other projects"
- "I'm not sure the terrace is necessary, perhaps just give more space to the upper level rooms"



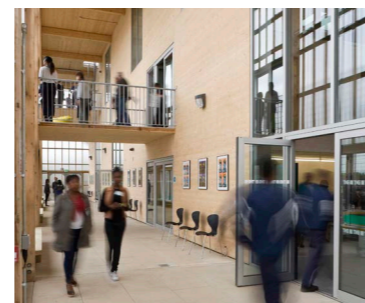
There are a lot of talented people on the estate, a workshop is a great idea  
Good not to have to go to other neighbourhood

Larger kitchen for hot food (Sufra project to potentially use space)  
Book club, movie night, encourage people outside

Important to have large storage space (lockable/separate units)  
Allow space for 1-2-1, private meetings



1 Multi-functional Community Hall



2 Entrance Hall



3 Cafe and Workshop Space



4 Recording Studio



5 Flexible Room

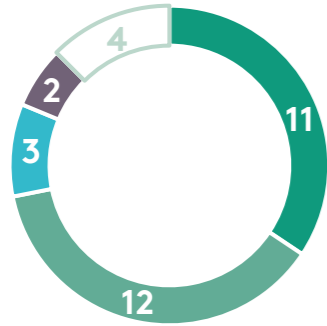


# Future St Raphael's

## Summer Exhibition - Event Summary & Feedback

### Materiality

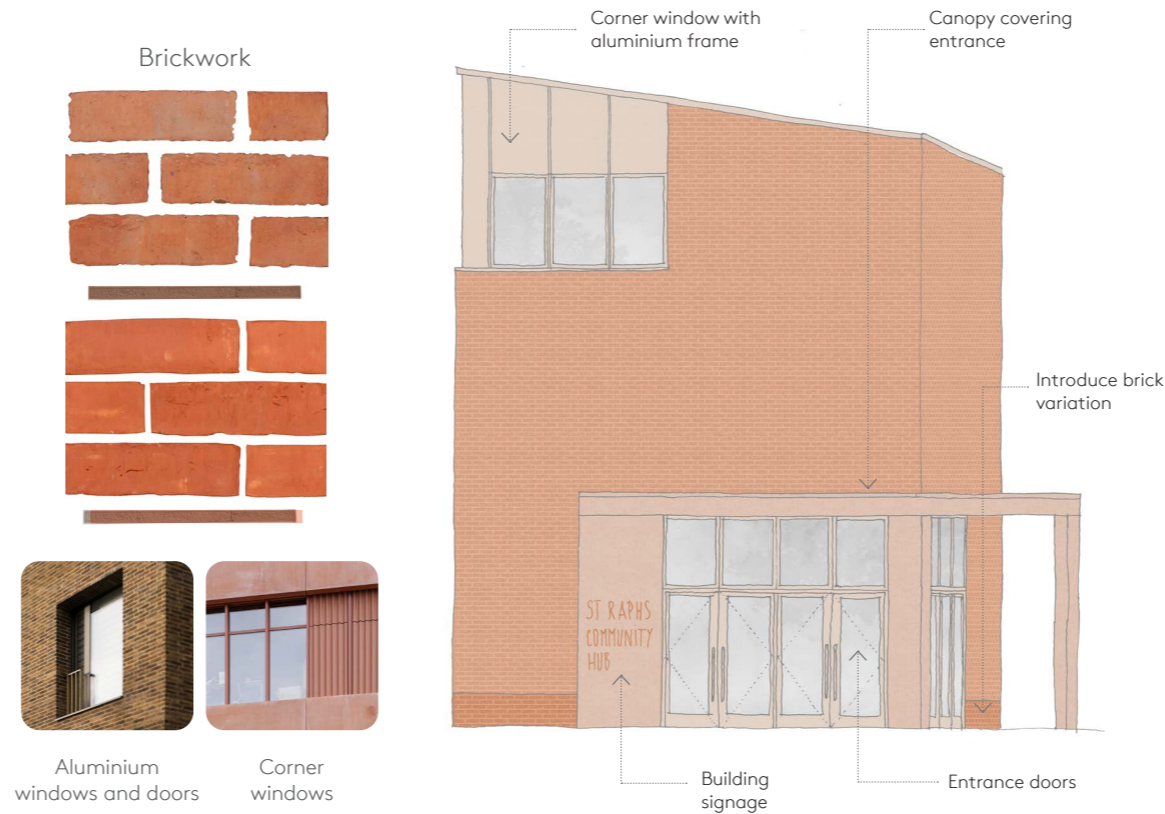
#### 4. Do you like the proposed external materials?



- "I really like them"
- "I like them"
- "Not sure"
- "I don't like them"
- "I don't like them at all"
- No response

#### Comments

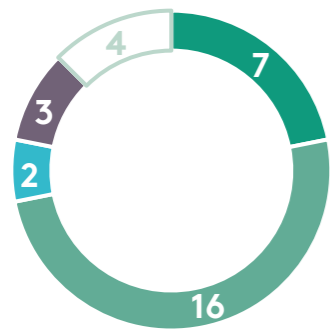
- "They match the bricks of the estate, it blends well"
- "More vibrant coloured will be welcomed"
- "They are really sturdy and no plastic which is good"
- "its modern but left some memories for us, meaning by that the bricks are the same bricks to the ones that [will be] broken down"



#### 6. Do you have any thoughts on our approach to sustainability?

- "I love that it's made of recycled materials and ventilated materials. Honestly very thoughtful"
- "I like the natural ventilation ideas, it's getting very hot in the summer"
- "They are all strong which is brilliant"
- "I suggest using strong wood"
- "OK"
- "I think it's good that you use the open space for something useful"

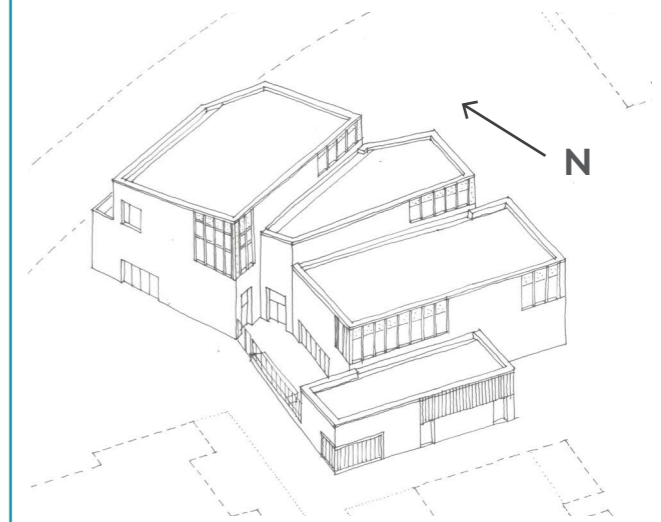
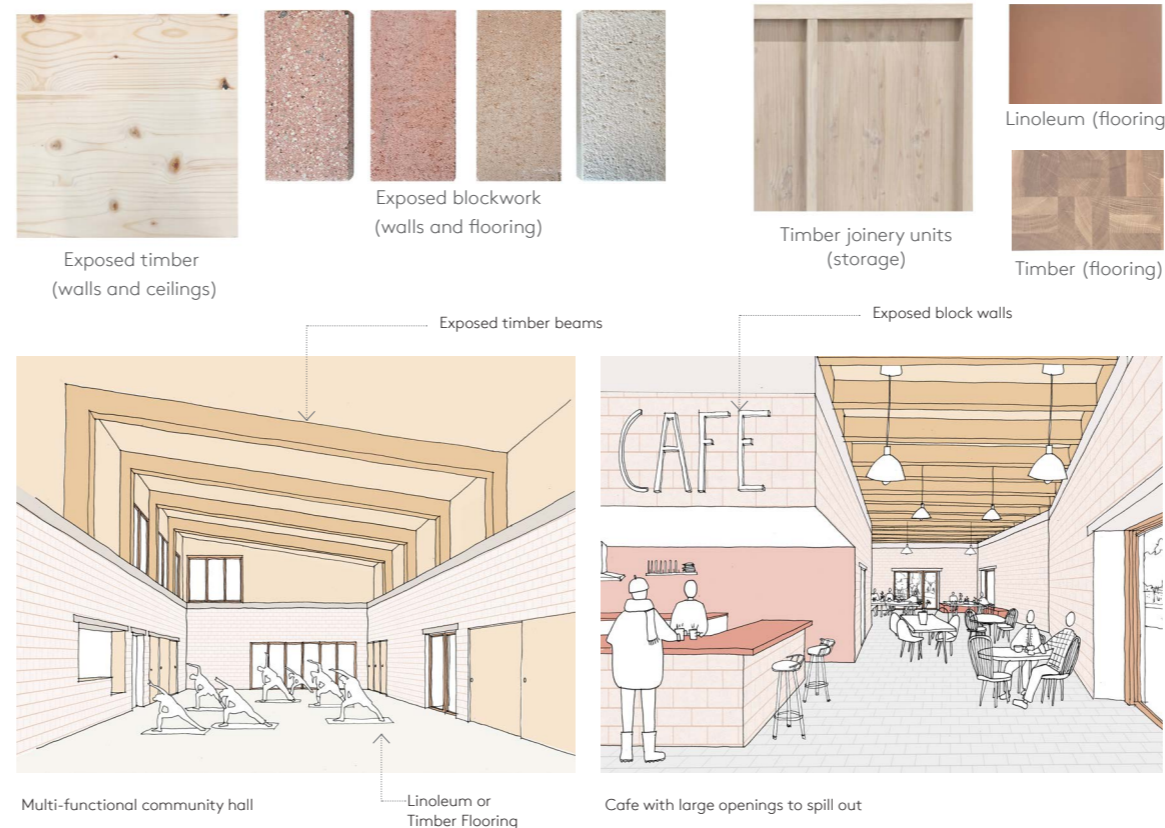
#### 5. Do you like the proposed internal materials?



- "I really like them"
- "I like them"
- "Not sure"
- "I don't like them"
- "I don't like them at all"
- No response

#### Comments

- "Good choice of material" Lighter brick + lighter block
- "Block flooring is good in the entrance, but not in the café as will be difficult to clean"
- "The internal materials are really natural"
- "I like the paler bricks/sandstone"



During the day high level windows allow for natural northern light and ventilation



# Future St Raphael's

## Summer Exhibition - Event Summary & Feedback

### Landscape Improvements

7. What do you think about our designs for the different types of landscape?



**Comments**

"The pedestrian priority and slow traffic will be a huge improvement"

"when the north circular becomes busy traffic cuts through, slowing the traffic would only make matters worse"

"I love the multi-purpose features"

"Some of the playgrounds are broken so new play areas are exciting to hear about and more green would be relaxing"

8. What kind of activities would you like to see more of?

#### Events and activities in Lilburne Square

Respondents could choose up to three options

i] Staged Performances



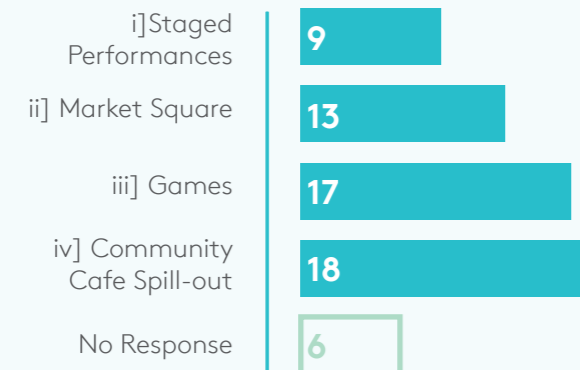
ii] Market Square



iii] Games



iv] Community Cafe Spill-out



**Comments**

"Market space a good idea, 'garage sales'"

"Good place to gather when it's hot"

"Ensure public realm and building is accessible for wheelchairs, prams... with wide pavements and no steps."

"Market good idea. Love it! Very necessary"

#### Playable, multi-functional landscape

Respondents could choose up to three options

i] Hard-surface play



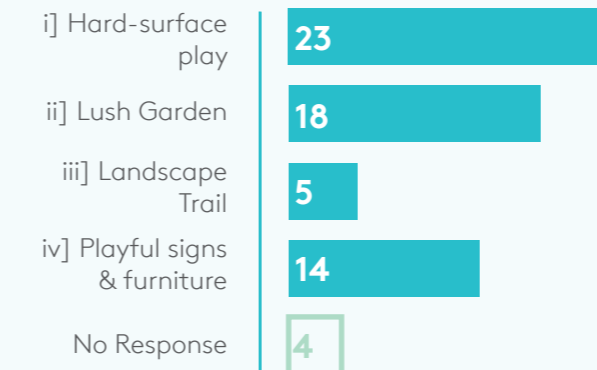
ii] Lush Garden



iii] Landscape Trail



iv] Playful signs & furniture



**Comments**

"Play area on other side of the road is dangerous for kids."

"Garden needs summer irrigation - Drip system?"

"I am sure most kids will enjoy it"

Children need space to run



# Future St Raphael's Summer Exhibition - Event Summary & Feedback

## 9. What kind of materials, furniture and planting would you like to see?

Respondents could choose up to three options

Size of images corresponds to popularity:

### Materiality and Furniture



2 votes

ii] Setts for Entrances

8 votes  
iii] Stepping Stones & Gravel



11 votes



iv] Tree Stumps

17 votes

i] Unitised Pavers



22 votes

v] Seating Around Tree

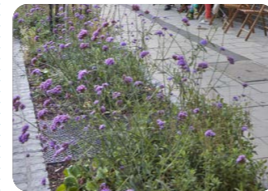


17 votes  
vi] Bench

### Planting

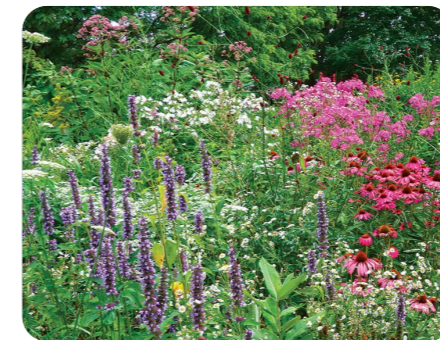
9 votes

i] Rain garden/Swale



10 votes

ii] Ecology Object



14 votes

iii] Pollinator Garden



iv] Moist Meadow

11 votes



15 votes

v] Tree Palette in the Estate

21 votes

vi] Fruit Trees



### Comments

"I really love the options"

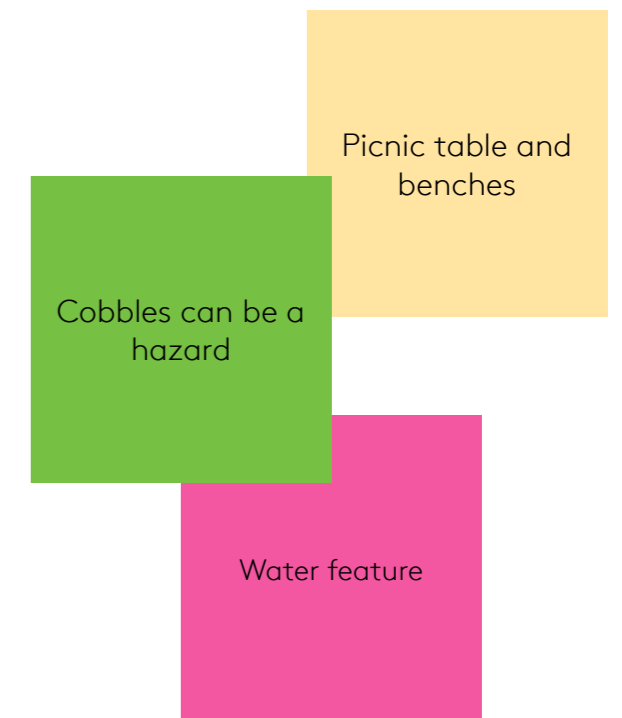
"A fountain for birds and small animals, summer is very hot and dry"

"I hope they will provide constant and professionally trained workers to see to the running and up-keep"

"I like the idea of stepping stones but not the gravel."

"The fruit trees - I think would rot, I don't think many people would pick them"

"More green and flowers"



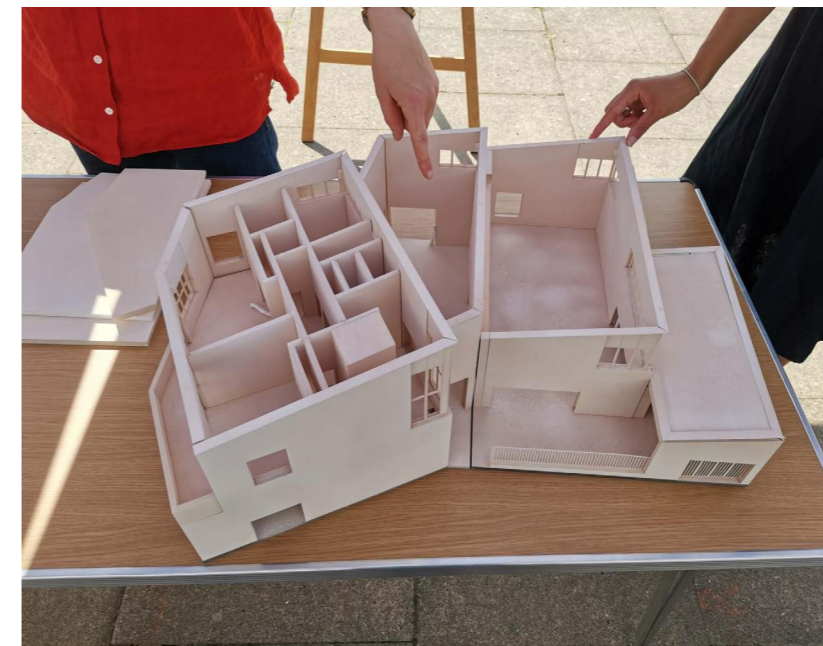
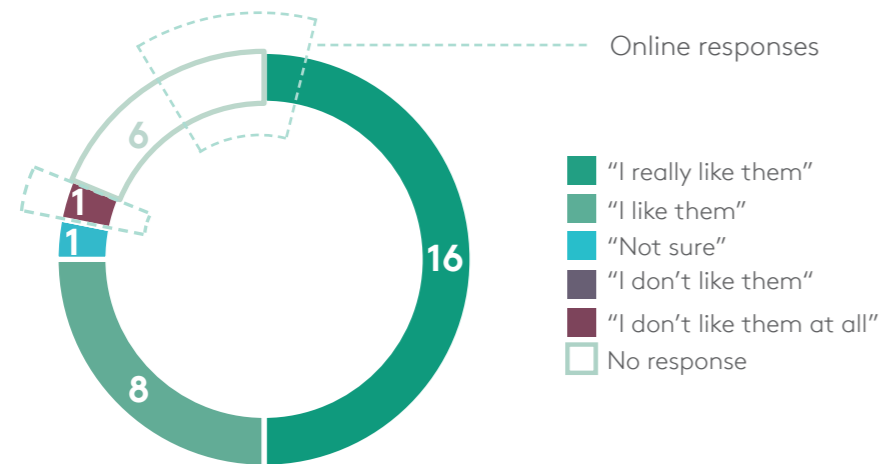


# Future St Raphael's

## Summer Exhibition - Event Summary & Feedback

### Additional Comments

8. Overall, how do you feel about the ways we have incorporated your ideas into the design?



#### Comments

*"It's a space for everyone, which is exactly what this estate needs"*

*"I'm sure these ideas will help St Raph's"*

*Thanks for listening*

*"More design around the blocks please"*

*"Frustrating that so many people from the estate & SRV have asked for easier car access to the N.Circular road towards Stonebridge/Harrow road."*

9. Do you have any other comments?



*"I believe that this is a very thoughtful and considerate scheme that would bring our community a lot closer and have a positive affect on the community."*

*"The staff are warm and welcoming with in depth knowledge about the community centre. They welcome new ideas and are honest and practical about the information they are giving - over all I'm very impressed and extremely happy about the new community hub, my children will love it."*

*"Hope everything goes well with the projects, very excited to see how it turns out."*

*"Can you please make a football pitch?"*

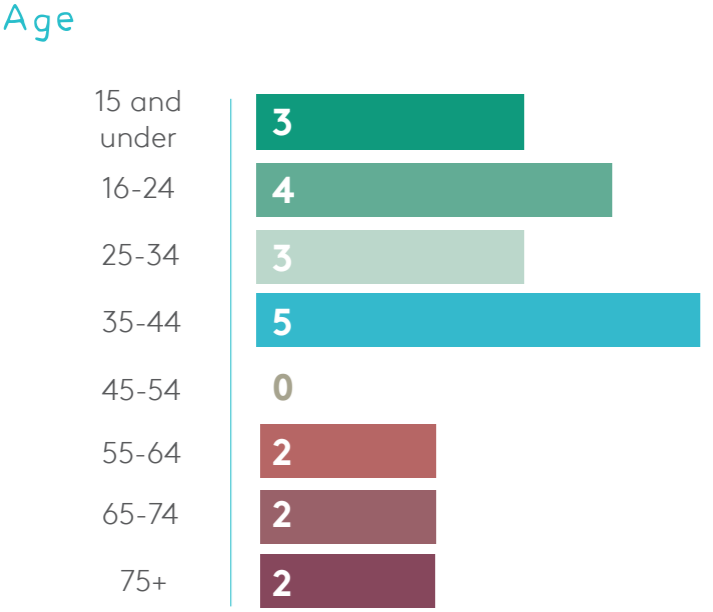
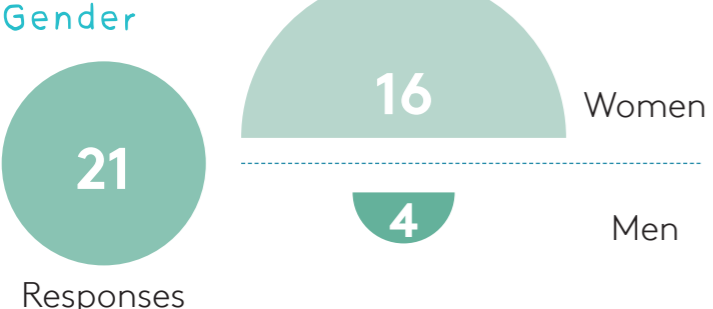


# Future St Raphael's

## Summer Exhibition - Event Summary & Feedback

### Equality monitoring

All equality responses are anonymous



**Sexual Orientation**

**100%**  
of responders indicated their sexual orientation as **Heterosexual**

